

GAEA Technologies Ltd.

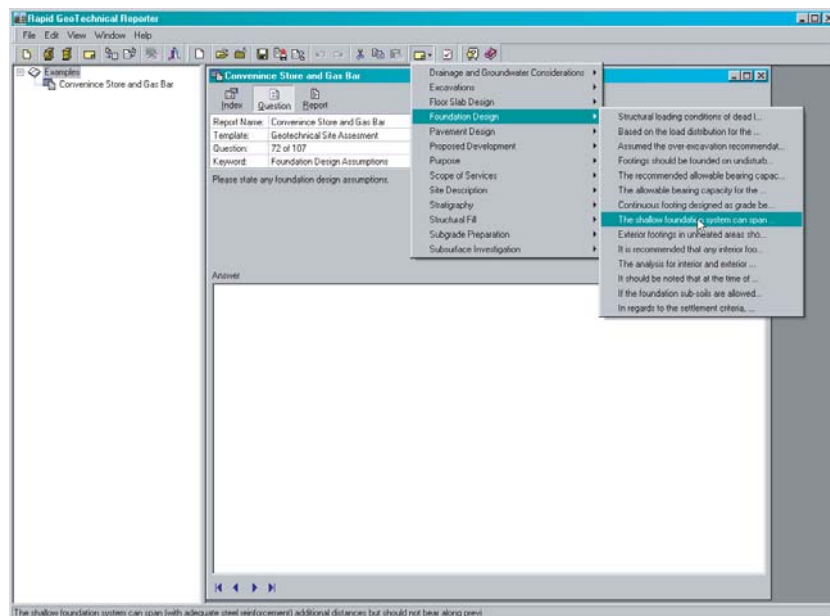


Rapid Geotechnical Reporting

We are very pleased to announce the release of our Rapid Geotechnical Reporting program. This program represents a new method for creating all types of geotechnical engineering reports.

Rapid Geotechnical Reporting has been designed to minimize the amount of time required to generate geotechnical engineering reports and to maximize the flexibility of the final report. A variety of reports can be created, the program currently comes with templates for conventional shallow and deep foundations. More templates are always being added and we welcome your suggestions.

The Rapid Geotechnical Reporting program is used to collect answers to pre-designed questions in a template. These answers are then merged and a standard report is generated in Microsoft Word. The merging process allows the user to insert different responses and paragraphs into the report depending upon how a question is answered.



Prices

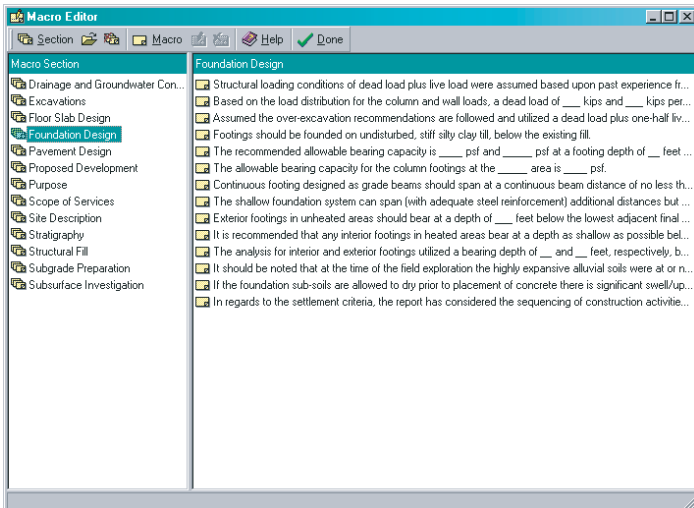
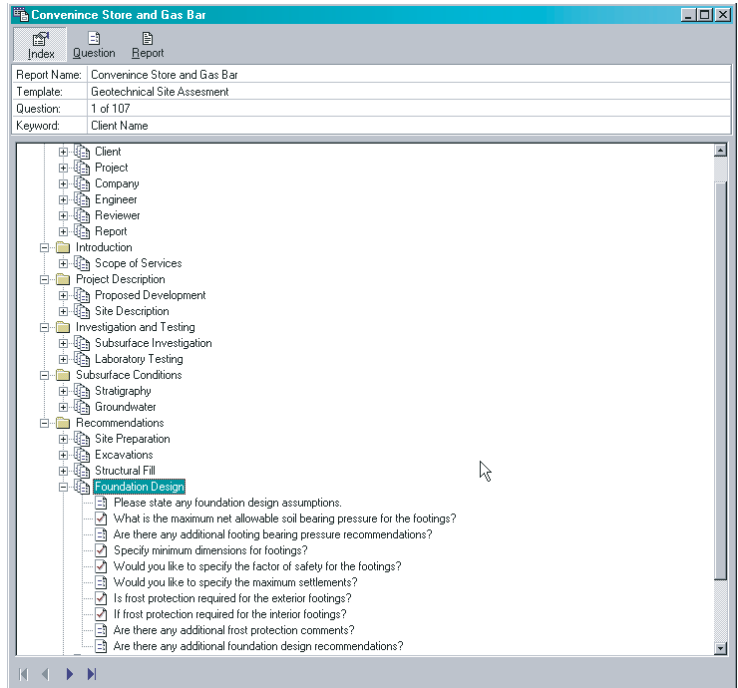
GAEA Technologies Ltd.
87 Garden Street
Whitby, ON, L1N 9E7
CANADA

Web: www.gaea.ca
Email: sales@gaea.ca
Tel: (905) 666-7527
Fax: (905) 666-3744

SingleUser	\$795US
AdditionalLicense	\$595US
AnnualMaintenance	\$195US
NetworkLicense (1 ConcurrentUser)	\$1390US
AdditionalConcurrentUser	\$595US
NetworkAnnualMaintenance	\$275US

Features

- ★ Significantly reduces time to create final report.
- ★ Produces a consistent, high-quality report.
- ★ Eliminates the possibility of cut and paste errors that occur when modifying old reports.
- ★ Prompts users to enter complete information and recommendations.
- ★ Collects answers to pre-designed questions in a template provided by GAEA.
- ★ Comes with templates for shallow and deep foundations.
- ★ More templates are always being added.
- ★ Generates merged final report that can be edited in Microsoft Word format.



- ★ Can insert entire paragraphs based on simple yes or no questions.
- ★ Reports can be generated to follow any standard or need.
- ★ Default answers to common questions.
- ★ The answers to questions are tracked, and a list of unanswered questions can be displayed.
- ★ Microsoft Access database management system. Microsoft Access is not required to run program.
- ★ Network compatible and able to track projects over a network.

- ★ Report templates are created and edited in Microsoft Word.
- ★ There can be an unlimited number of reports and projects.
- ★ Text macros can be created on the desktop and used to rapidly enter common answers.
- ★ Text macros are sorted into sections for easier selection.
- ★ Merged report can be immediately opened in Word.

