

# GAEA Technologies Ltd.



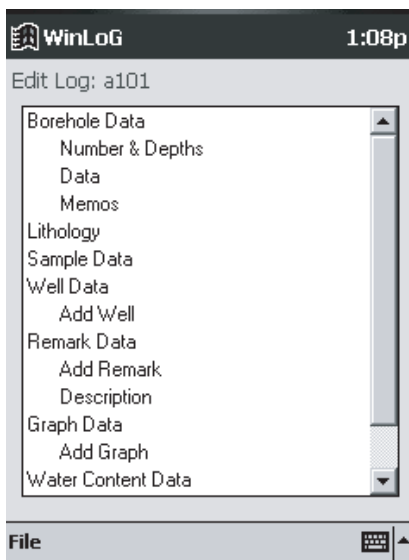
## Pocket WinLoG

Pocket WinLoG has revolutionized the way borehole and well data is collected in the field. It has never been so easy to enter borehole data and create logs. Reduce hours of data entry and editing by selecting a pre-designed template and using the quick macros provided in the program. Once all your information has been inputted, you can upload or email the data to your desktop for further editing and printing.

Just imagine going into the field with a pocket computer. It's light weight and fits in your pocket. You start collecting your borehole data and enter it into the program. With a few easy clicks you're finished. No paper, no pens. When you go back to the office all you have to do is upload the information to your desktop. That's it. Your log is completed. Your finished product is a professional full colored log for your report.

We know time is money. Don't waste needless amounts of time going back and forth.

Consider these benefits:



- ★ Pocket PC's are compact and easy to carry in the field.
- ★ Pocket WinLoG is easy to learn and easy to operate.
- ★ It will reduce the time needed to create borehole logs.
- ★ The data you've collected will be more complete and accurate.
- ★ Complete logs within minutes using the macros in Pocket WinLoG.
- ★ Pocket WinLoG saves data automatically once entered, so you never have to worry.

### Prices

SingleUser .....	\$595US
AdditionalLicense .....	\$450US
AnnualMaintenance .....	\$150US

### GAEA Technologies Ltd.

87 Garden Street  
Whitby, ON, L1N 9E7  
CANADA

Web: [www.gaea.ca](http://www.gaea.ca)  
Email: [sales@gaea.ca](mailto:sales@gaea.ca)  
Tel: (905) 666-7527  
Fax: (905) 666-3744

# Features

- ★ Easy data entry screens for doing field work.
- ★ From the menu tree form, select the data type required and enter log data in the form.
- ★ Form screens include tabs, scroll bars, arrow, add & minus, macro, help buttons, select text and keyboard features for you to input all data without changing the screen of your log.
- ★ All of the data once entered on the form is automatically saved into your logs.
- ★ Download your WinLoG templates to your Pocket PC for quick data entry in the field.
- ★ Pocket WinLoG can store an unlimited number of templates previously designed in the WinLoG desktop version.
- ★ Create an unlimited number of logs for each project
- ★ Save all logs individually within a project.
- ★ Borehole data can contain: general header and footer data, borehole depths, elevation, lithologies, samples, well data, remarks, graphs, water contents, core, symbols, and mem os.

- ★ Borehole logs can be completed on quickly and easily on-site
- ★ Copy a previous log completed and easily edit the data to create a new log.
- ★ Click on the macros button in the lithology and well information forms for quick and easy data entry.
- ★ Add or remove wells, remarks, graphs in your logs.
- ★ General header and footer information is filled out on the initial form from your template.
- ★ Unlimited number of text characters in lithology and remarks columns.
- ★ Choose contact angles, symbols, and or macros to complete lithologies.
- ★ Input sample information, symbols, values, by borehole depth
- ★ Download as many library symbols required to complete your logs.

- ★ Symbols are easily viewed on screen, when selected individually shows on the form with the data.
- ★ Complete well diagrams in the field by choosing your well type, including annotations, water levels, well components or use a well macro for quick data entry.
- ★ Enter graph data easily by depth and value.
- ★ Easily select the templates and symbol libraries in WinLoG to download to Pocket WinLoG.
- ★ All lithology and well macros can be download to Pocket WinLoG using a simple menu command in WinLoG.
- ★ Entire projects or individual logs can be imported from Pocket WinLoG into either new or existing projects in the desktop version of WinLoG.