

# GAEA Technologies Ltd.

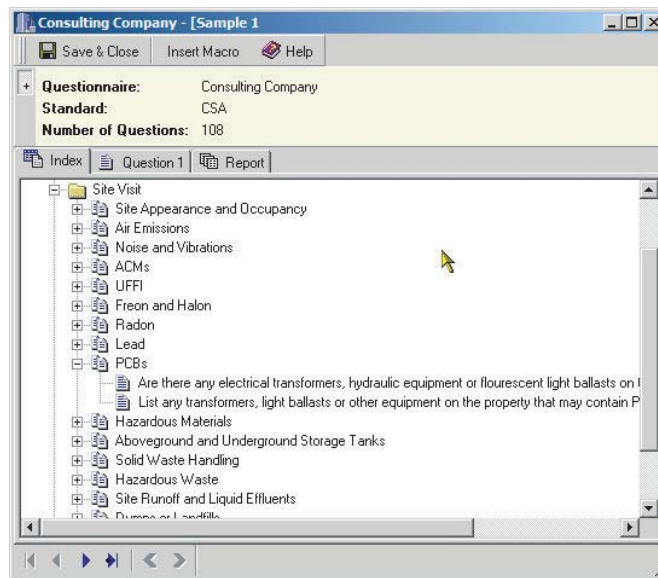


## Pocket ESA

Pocket ESA represents a new method for collecting and reporting Phase I and II ESA data, Transaction Screening, Asbestos Surveys, Radon Sampling, Lead Sampling, etc. The data can be collected either on a Pocket, Tabloid, Laptop, or Desktop PC.

Pocket ESA has been designed to minimize the amount of time required to generate standard Environmental Site Assessment reports and to maximize the flexibility of the final report. A wide variety of reports can be created; including Phase I ESAs, Phase II ESAs, Environmental Compliance, and Transaction Screening. The reports can be tailored to any standard such as CSA and ASTM.

Pocket ESA can be used to generate almost any kind of report, based on a report template and questionnaire. To help you to start using the program as soon as possible, the program comes with several questionnaires and



### GAEA Technologies Ltd.

87 Garden Street  
Whitby, ON, L1N 9E7  
CANADA

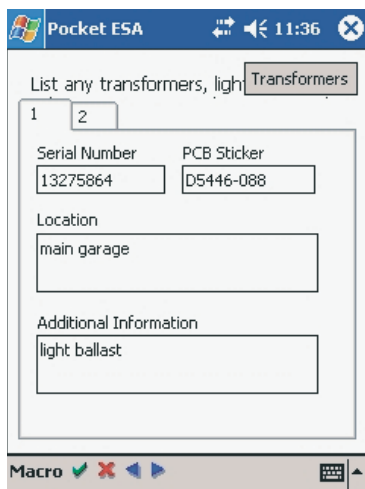
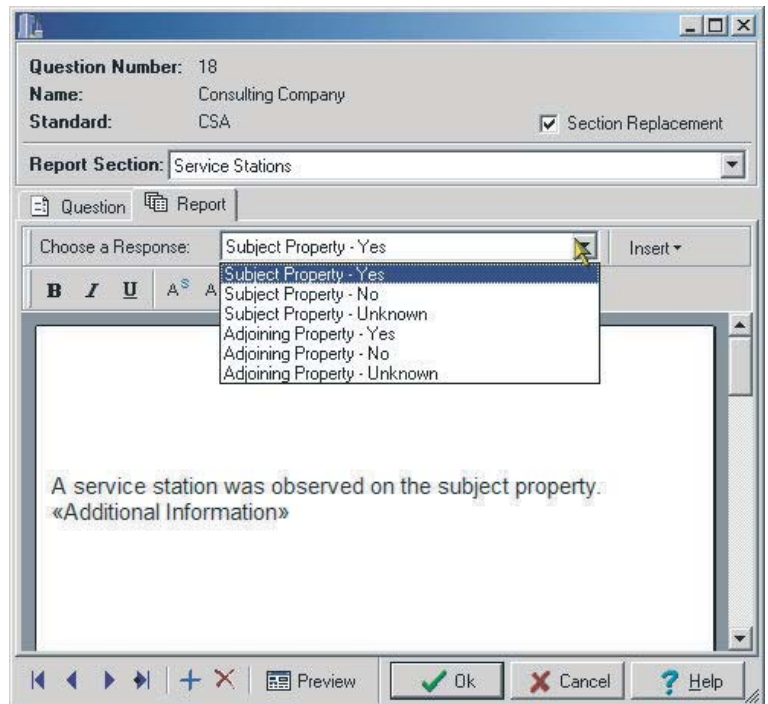
Web: [www.gaea.ca](http://www.gaea.ca)  
Email: [sales@gaea.ca](mailto:sales@gaea.ca)  
Tel: (905) 666-7527  
Fax: (905) 666-3744

### Prices

Single User .....	\$795 US
Additional License .....	\$595 US
Annual Maintenance .....	\$195 US
Network License (1 Concurrent User) .....	\$1390 US
Additional Concurrent User .....	\$595 US
Network Annual Maintenance .....	\$275 US

## Features

- ★ Significantly reduces time to create final report.
- ★ Produces a consistent, high-quality report.
- ★ Eliminates the possibility of cut and paste errors that occur when modifying old reports.
- ★ Prompts users to enter complete information and recommendations.
- ★ Collects answers to pre-designed questions in a template provided by GAEA.
- ★ More templates are always being added.
- ★ Generates merged final report that can be edited in Microsoft Word format.
- ★ Can insert entire paragraphs based on simple yes or no questions.
- ★ Reports can be generated to follow any standard, including ASTM and CSA.
- ★ In addition to your answers to the questionnaire, photos and third-party reports can also be integrated into the final report.



- ★ Default answers to common questions.
- ★ The answers to questions are tracked, and a list of unanswered questions can be displayed.
- ★ Microsoft Access database management system. Microsoft Access is not required to run program.
- ★ Network compatible and able to track projects over a network.
- ★ Report templates are created and edited in Microsoft Word.
- ★ There can be an unlimited number of reports and projects.

- ★ Text macros can be created on the desktop and used to rapidly enter common answers.
- ★ Text macros are sorted into sections for easier selection.
- ★ Merged report can be immediately opened in Word.
- ★ The data can be collected on a Pocket PC, a laptop, or paper form.
- ★ The data can be uploaded from the Pocket PC one survey at a time or an entire project at a time.

